

# The Role of AI and ML in Precision Medicine: A Case Study of Brittle Bone Disease

Emma Larson

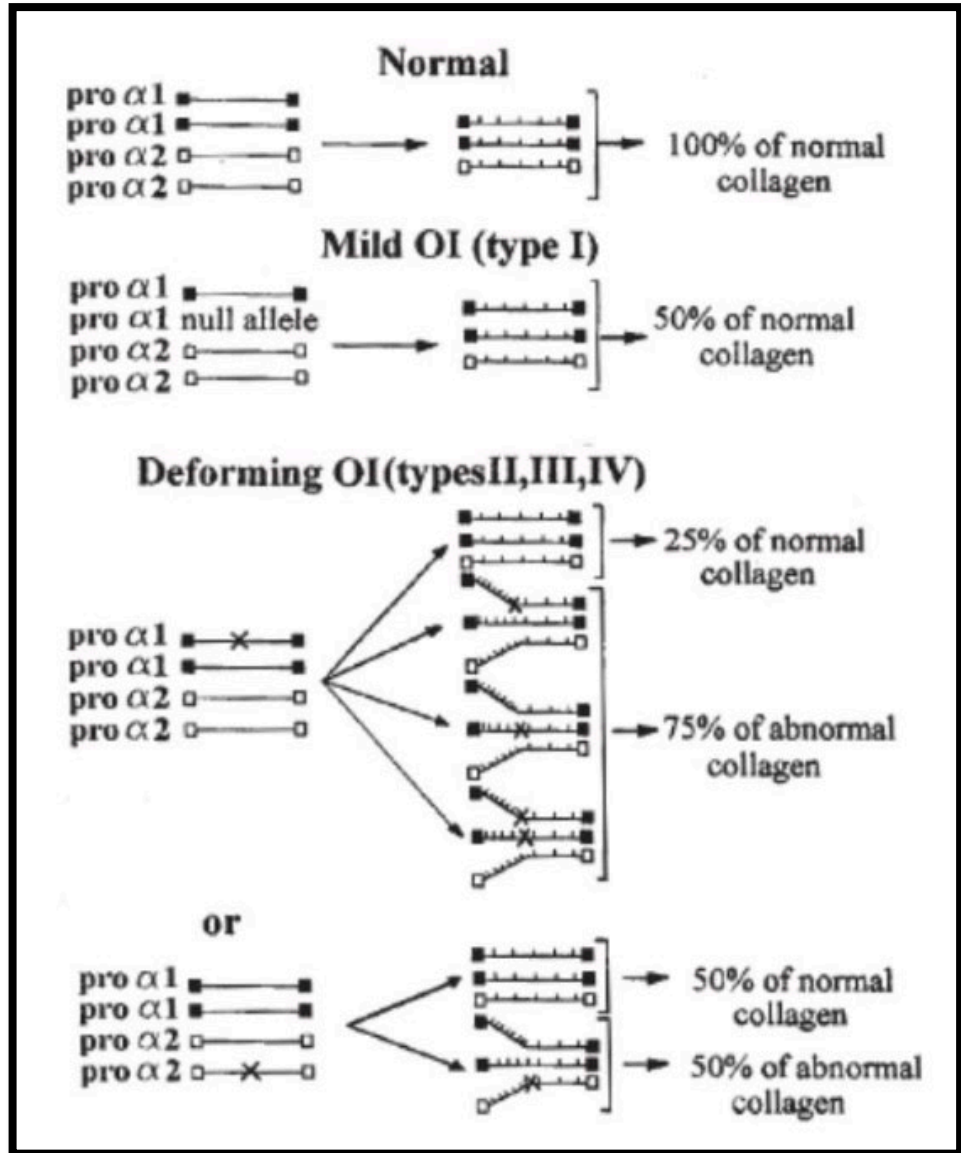
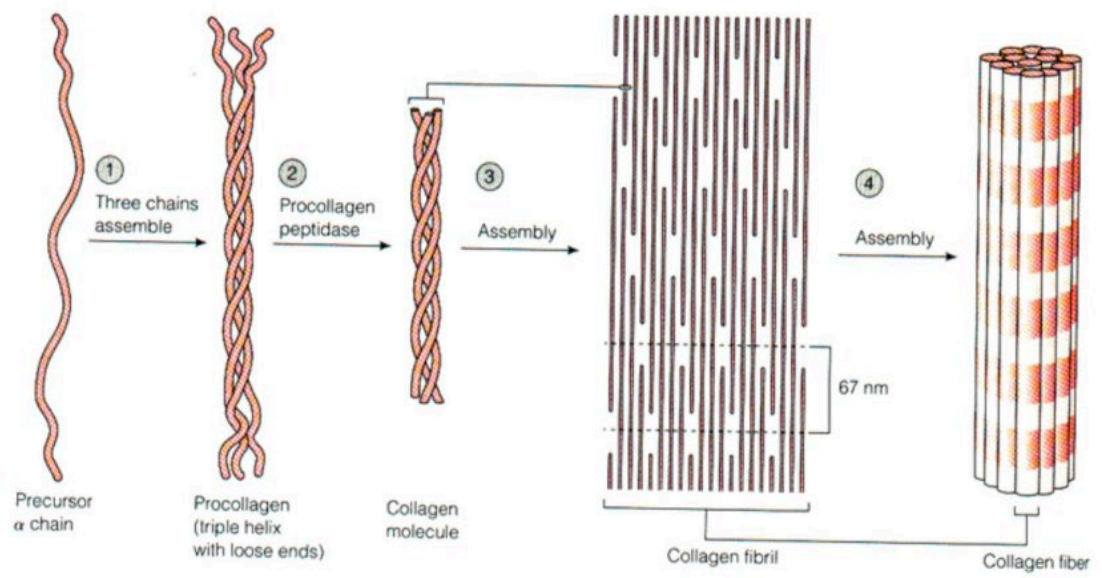
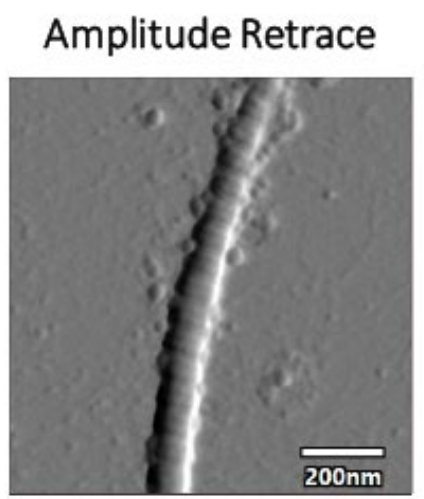
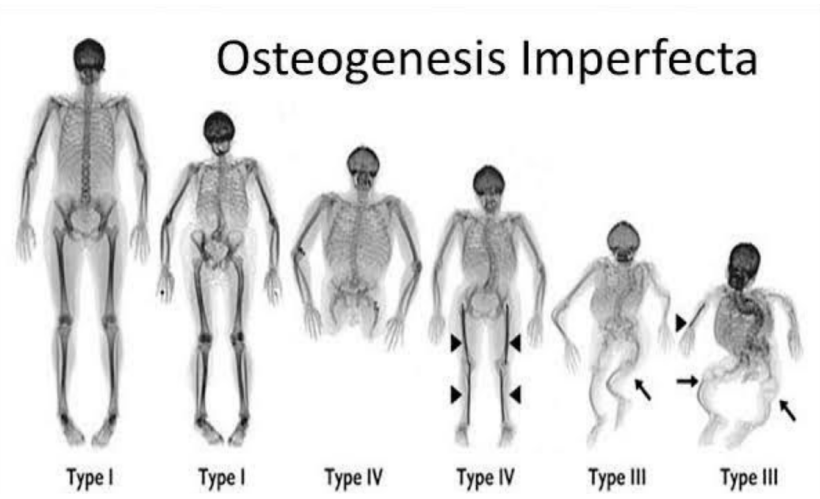
Graduate Student in Health Informatics

Baum Lab Research Assistant

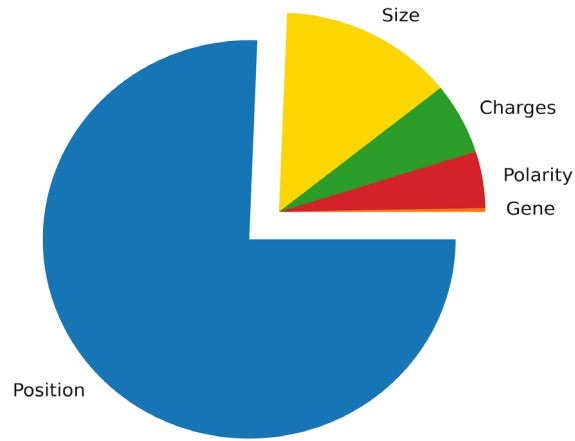
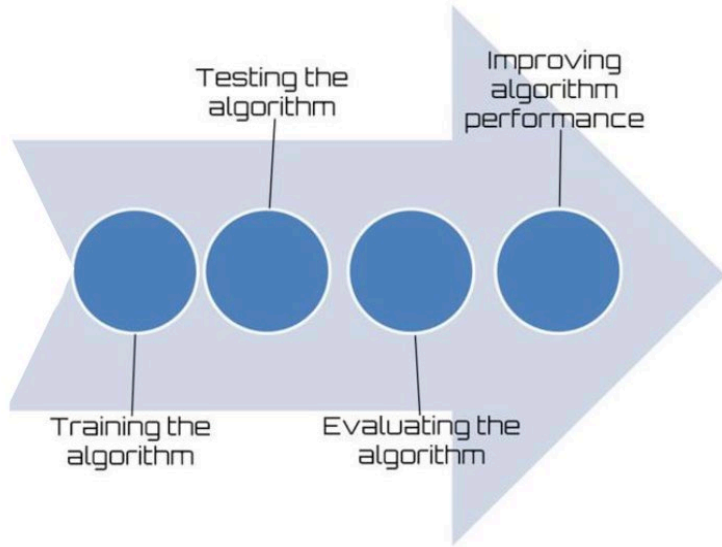
Chemistry & Chemical Biology Department

[el875@shp.rutgers.edu](mailto:el875@shp.rutgers.edu)

# Brittle Bone Disease



# AI and ML in Precision Medicine



Model accuracies, 2025 (binary, lethality)

Decision Tree	(0.94)
Random Forest	(0.93)
Logistic Regression	(0.72)
KNN	(0.86)
SVM	(0.79)
Keras CNN	(0.85)

