

# Peptide Screening Using in vivo Phage Display for the Development of Targeted Therapies

---

Alex M. Ille, Ph.D.

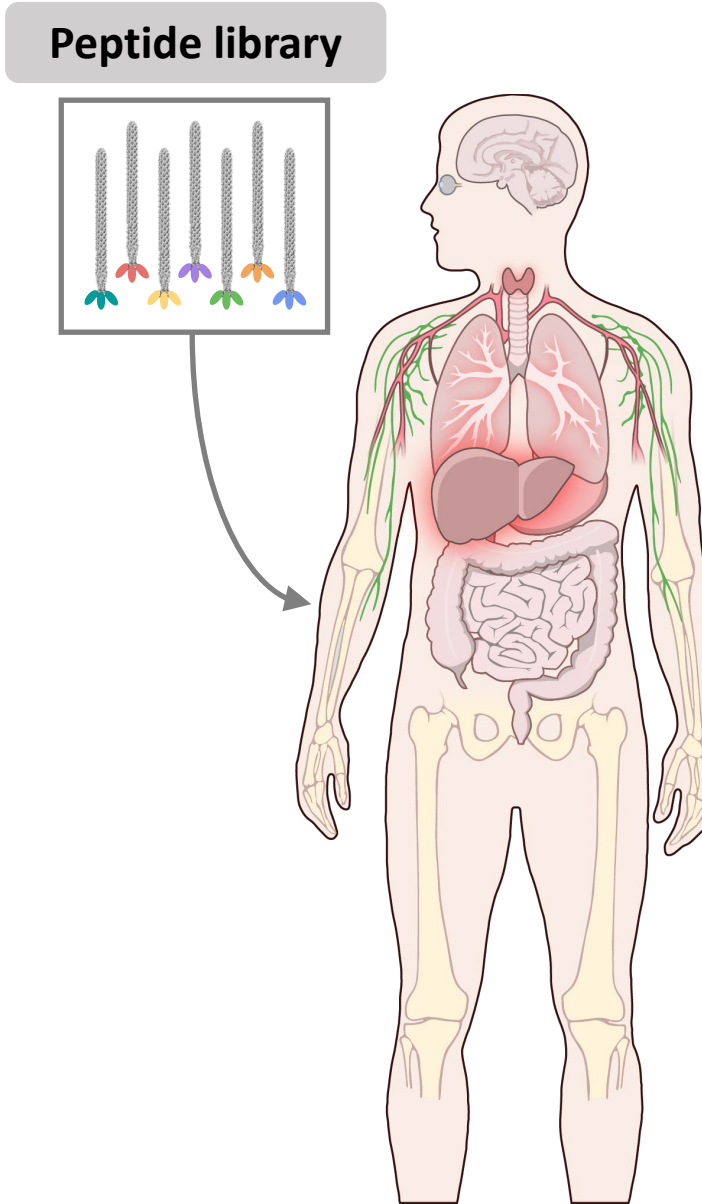
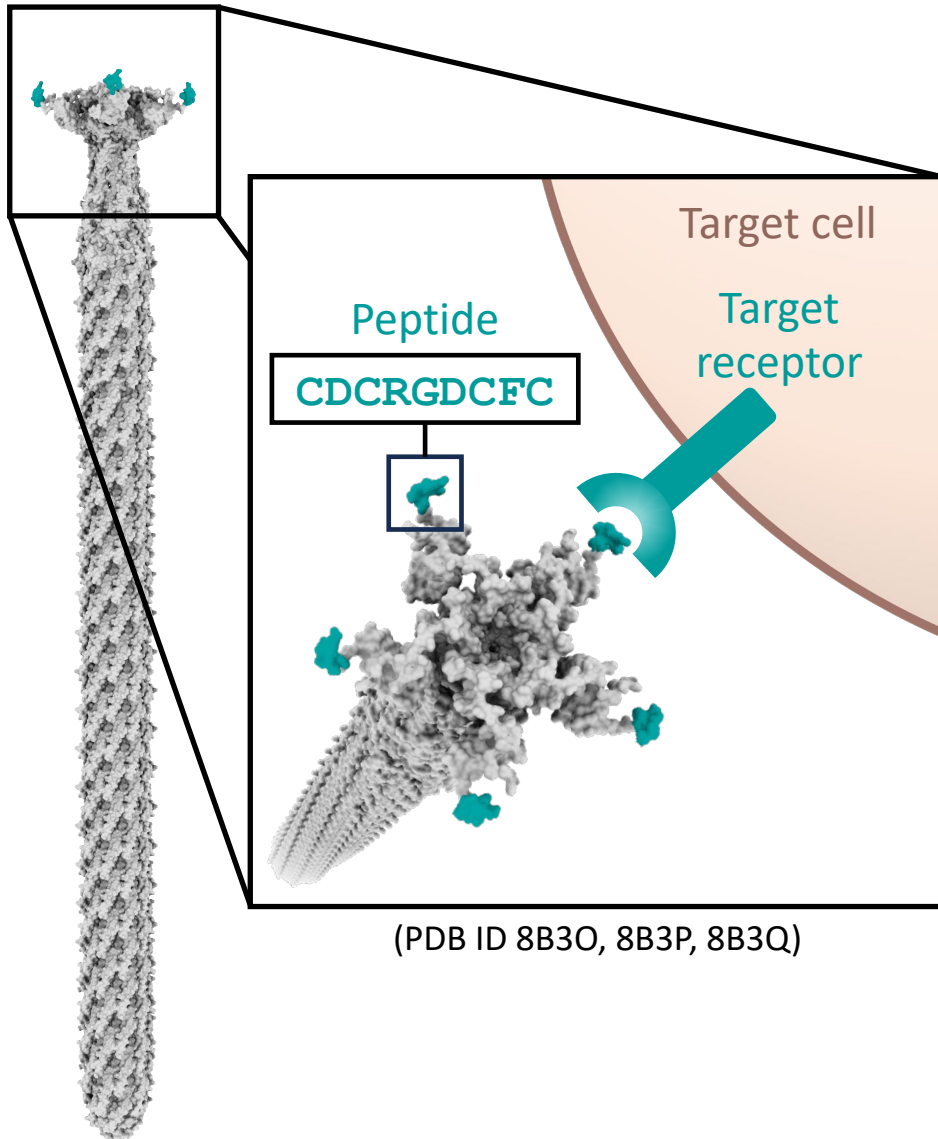
Postdoctoral Research Associate

Joint Laboratory of Renata Pasqualini, Ph.D. and Wadih Arap M.D., Ph.D.

Rutgers Cancer Institute – Newark

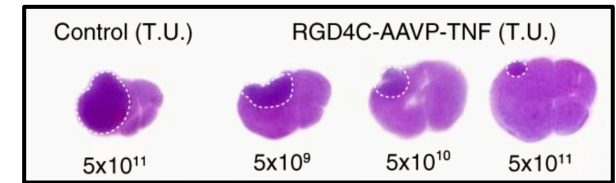
mai86@rutgers.edu

# In vivo Phage Display Technology



## Applications

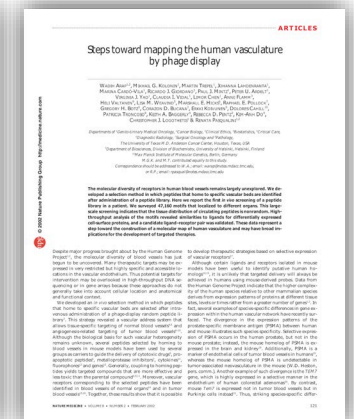
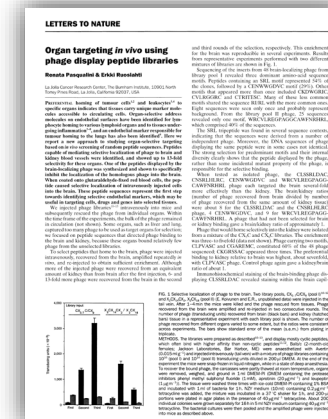
- Discovery of tissue-specific peptides and target receptors
- Development of targeted therapeutic and diagnostic strategies



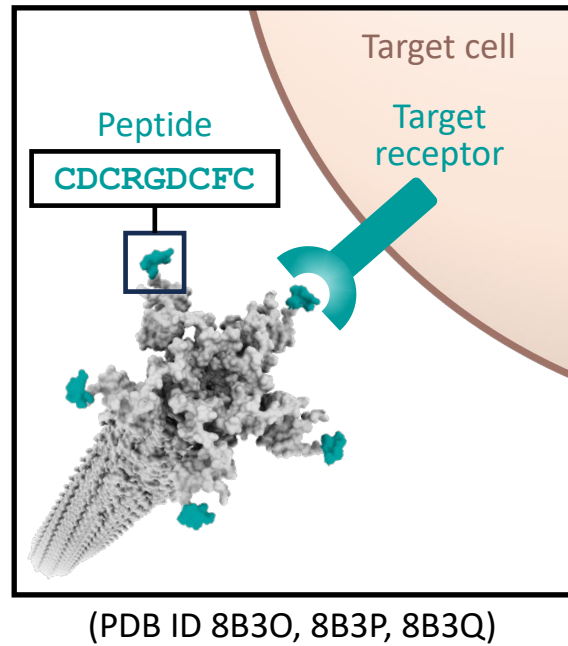
Staquinini & Smith et al.  
*Cancer Gene Therapy* 2020

Pasqualini & Ruoslahti  
*Nature* 1996

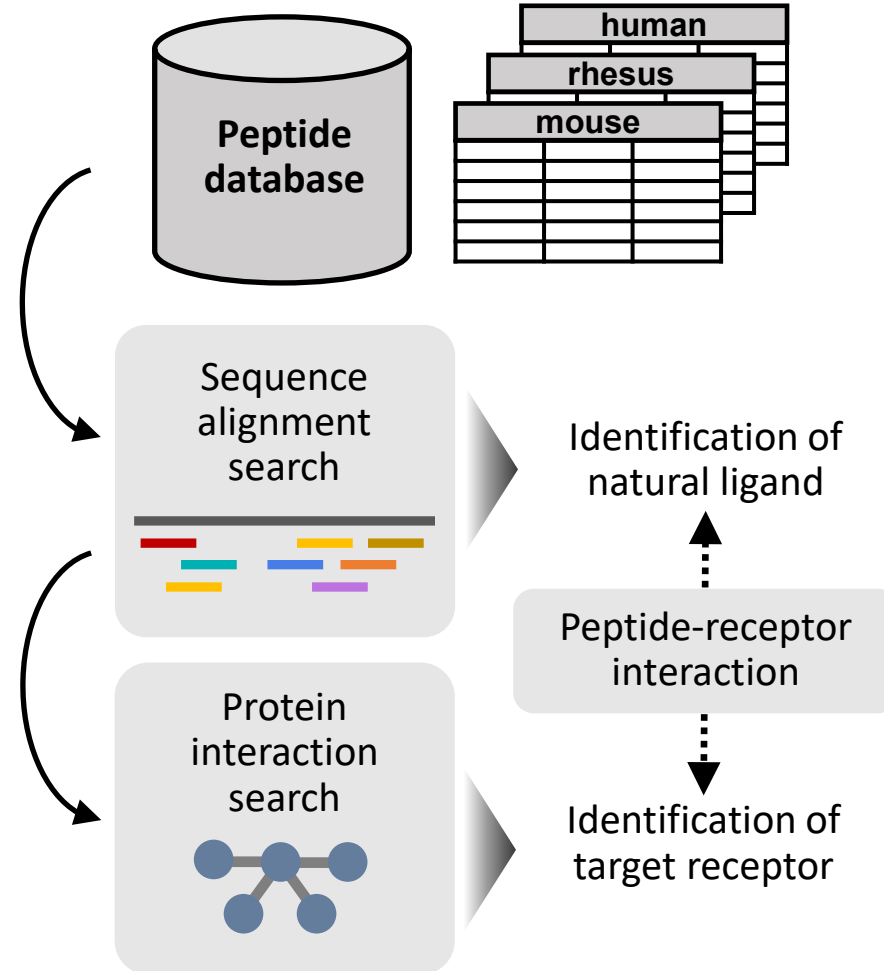
Arap et al.  
*Nature Medicine* 2002



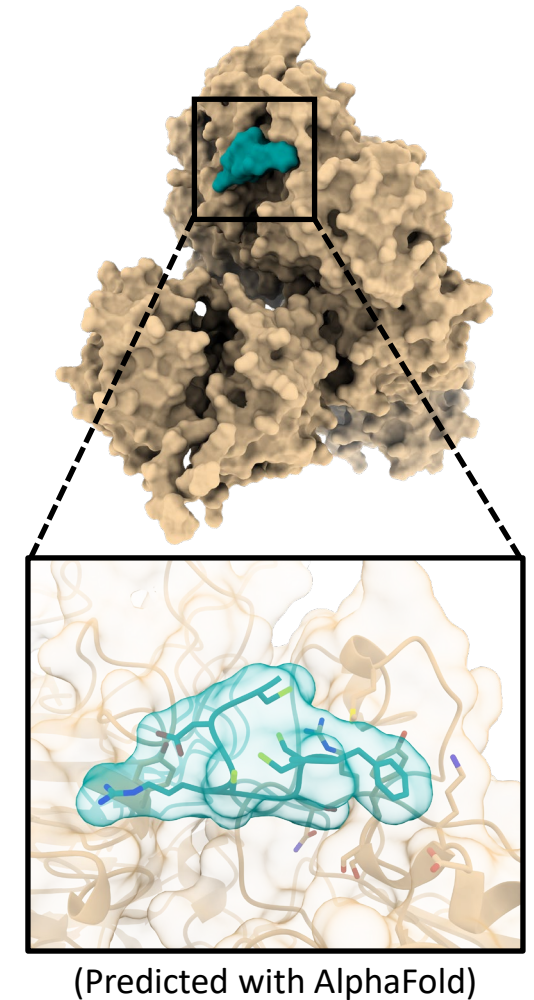
# Processing Data from Phage Display Peptide Screenings



## Sequence analyses



## Structural predictions



# Acknowledgments

## Principal Investigators

- Renata Pasqualini, Ph.D.
- Wadih Arap, M.D., Ph.D.

## Arap/Pasqualini Laboratory Members

- Emmanuel Dias-Neto, Ph.D. (Visiting Scholar)
- Diana N. Nunes, Ph.D. (Visiting Scholar)
- Daniela I. Staquicini, Ph.D.
- Tracey L. Smith, Ph.D.
- Fenny H. F. Tang, Ph.D.
- Megha Chagtoo, Ph.D.
- Christopher Markosian M.D., Ph.D. candidate

## Collaborators

- Stephen K. Burley, M.D., D.Phil.
- Israel T. da Silva, Ph.D.

## Funding

- Levy-Longenbaugh Donor-Advised Fund
- National Cancer Institute
- National Institutes of Health

Dr. Pasqualini



Dr. Arap



Arap/Pasqualini Laboratory

